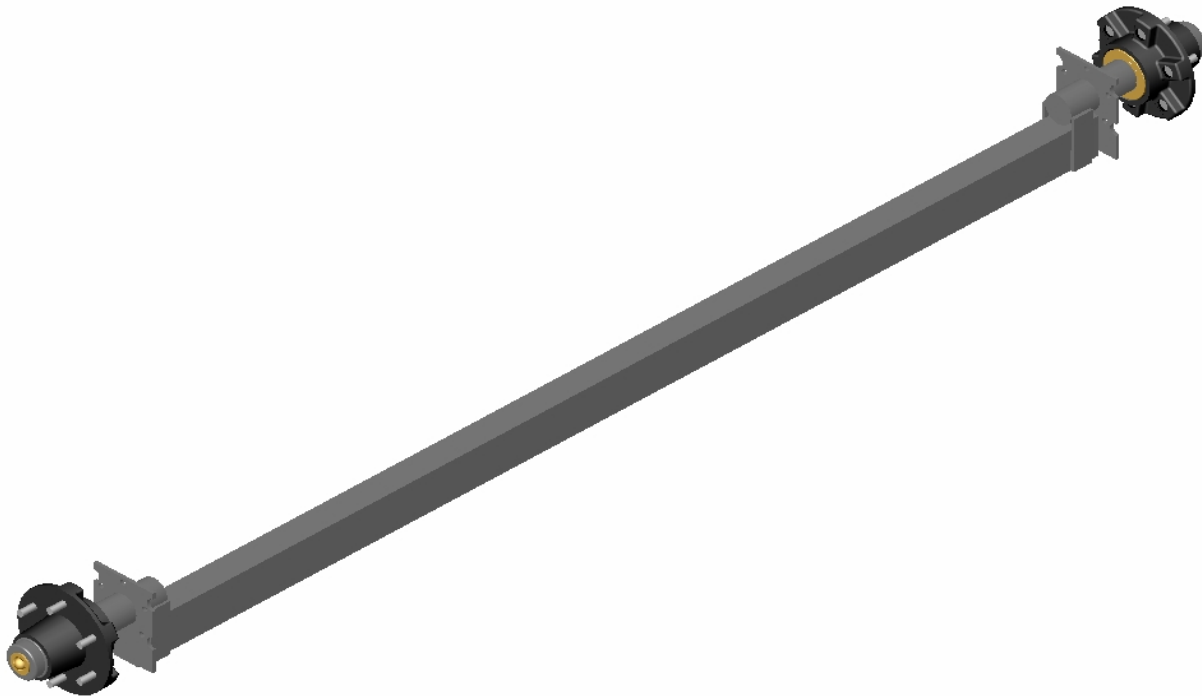

AXLES AND AXLE COMPONENTS



AXLES AND AXLE COMPONENTS

AXLE WELDMENTS

An axle weldment consists of spindles welded to the axle tube. The spindles are welded with a 1.5 degree camber to the tube.

Our part number descriptions give you all of the necessary information for you to order the axle weldment you need.

Example:

Part Number – 300-00301-ZN

Description – AW 1.5 x 1.5 x 46.75 SI (42.25” C/C THRU)

AW= Axle Weldment

1.5 x 1.5 x 46.75= Size of Axle Tube

SI= Straight spindle Inside

Other spindle designations:

SI = **S**traight spindle **I**nside

UI = **U**HI spindle **I**nside

UT = **U**HI spindle on **T**op

LUT = **L**arge **U**HI spindle on **T**op

42.25” C/C= Measurement between spring bolt centers

THRU= Spring center holes are drilled THRU axle tube

Other hole designations:

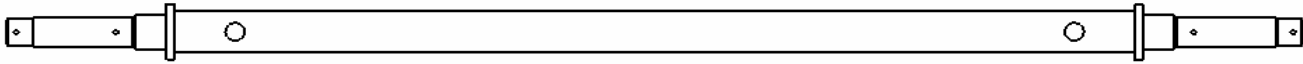
UP= Spring center holes are drilled on TOP of axle tube

DOWN= Spring center holes are drilled on BOTTOM of axle tube

NOTE :

The top side of an axle weldment is designated by a weld spot placed on each end of the tube.

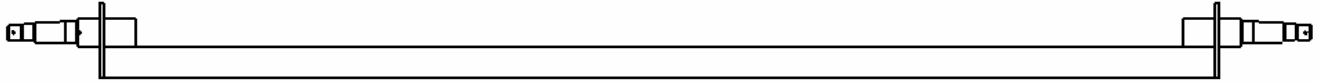
AXLE WELDMENTS - SPINDLES INSIDE



300-00072-ZN	AW 1.5 X 1.5 X 42.75 SI	38.25 C/C THRU	12 GA.	1500#
300-01042-ZN	AW 2 X 2 X 53.565 SI	39.0 C/C DOWN	12 GA.	2000#
300-00301-ZN	AW 1.5 X 1.5 X 46.75 SI	42.25 C/C THRU	12 GA.	1500#
300-00082-ZN	AW 1.5 X 1.5 X 50.75 SI	46.25 C/C THRU	12 GA.	1500#
300-00060-ZN	AW 2 X 2 X 60.5 SI	54.0 C/C DOWN	12 GA.	2000#
300-00213-ZN	AW 2 X 2 X 63.0 SI	55.0 C/C UP	12 GA.	2000#
300-01040-ZN	AW 2 X 2 X 63.0 SI	55.0 C/C UP	1/4" WALL	2700#
300-01162-ZN	AW 2 X 2 X 63.0 UI	55.0 C/C UP	1/4" WALL	3750#
300-00040-ZN	AW 2 X 2 X 63.0 SI	57.63 C/C DOWN	1/4" WALL	2700#
300-00453-ZN	AW 2 X 2 X 68.5 SI	62.0 C/C DOWN	1/4" WALL	2700#
300-01132-ZN	AW 2 X 2 X 70.5 SI	63.13 C/C DOWN	1/4" WALL	2700#
300-01261-BL	AW 2 X 2 X 71.5 SI	64.0 C/C DOWN	1/4" WALL	2700#
300-01261-ZN	AW 2 X 2 X 71.5 SI	64.0 C/C DOWN	1/4" WALL	2700#
300-01343-ZN	AW 2 X 2 X 73.5 SI	66.0 C/C DOWN	1/4" WALL	2700#
300-01379-ZN	AW 2 X 2 X 73.5 UI	68.0 C/C DOWN	1/4" WALL	3750#
300-01551-BL	AW 2 X 2 X 74.5 SI	68.13 C/C DOWN	1/4" WALL	
300-01551-ZN	AW 2 X 2 X 74.5 SI	68.13 C/C DOWN	1/4" WALL	
300-00568-ZN	AW 2 X 2 X 76.5 SI	68.0 C/C DOWN	1/4" WALL	2700#
300-01099-ZN	AW 2 X 2 X 76.5 UI	68.0 C/C DOWN	1/4" WALL	3750#
300-01134-BL	AW 2 X 2 X 79.0 UI	72.62 C/C DOWN	1/4" WALL	3750#
300-01134-ZN	AW 2 X 2 X 79.0 UI	72.62 C/C DOWN	1/4" WALL	3750#
300-00949-BL	AW 2 X 2 X 79.0 SI	75.0 C/C UP	12 GA.	2000#
300-00949-ZN	AW 2 X 2 X 79.0 SI	75.0 C/C UP	12 GA.	2000#
300-01517-NA	AW 2 X 2 X 80.0 UI	72.62 C/C DOWN	1/4" WALL	3750#
300-01624-BL	AW 2 X 2 X 80" UI	75.0 C/C UP	1/4" WALL	2700#
300-01624-ZN	AW 2 X 2 X 80" UI	75.0 C/C UP	1/4" WALL	2700#
300-00956-BL	AW 2 X 2 X 80.0 UI	75.0 C/C UP	1/4" WALL	3750#
300-00956-ZN	AW 2 X 2 X 80.0 UI	75.0 C/C UP	1/4" WALL	3750#
300-01067-BL	AW 2 X 2 X 82.0 UI	76.0 C/C DOWN	1/4" WALL	3750#
300-01067-ZN	AW 2 X 2 X 82.0 UI	76.0 C/C DOWN	1/4" WALL	3750#
300-01382-ZN	AW 2 X 2 X 82.5 UI	76.0 C/C DOWN	1/4" WALL	3750#
300-01520-ZN	AW 2 X 2 X 83.5 UI	76.0 C/C DOWN	1/4" WALL	3750#
300-01206-BL	AW 2 X 2 X 85.0 UI	76.0 C/C DOWN	1/4" WALL	3750#
300-01206-ZN	AW 2 X 2 X 85.0 UI	76.0 C/C DOWN	1/4" WALL	3750#
300-01327-ZN	AW 2 X 2 X 84.25 UI	77.75 C/C DOWN	1/4" WALL	3750#
300-00697-BL	AW 2 X 2 X 85.0 SI	78.5 C/C DOWN	1/4" WALL	2700#
300-00697-ZN	AW 2 X 2 X 85.0 SI	78.5 C/C DOWN	1/4" WALL	2700#
300-01404-BL	AW 2 X 2 X 86.0 UI	79.25 C/C DOWN	1/4" WALL	3750#
300-01404-ZN	AW 2 X 2 X 86.0 UI	79.25 C/C DOWN	1/4" WALL	3750#
300-01607-BL	AW 2 X 2 X 86.25 UI	79.25 C/C DOWN	1/4" WALL	

*GA. = GAUGE

AXLE WELDMENTS - SPINDLES ON TOP



NUMBER	DESCRIPTION	CENTER TO CENTER	MATERIAL	CAPACITY
300-00469-ZN	AW 2 X 2 X 65.0 UT	57.88 C/C DOWN	1/4" WALL	3750#
300-01285-ZN	AW 2 X 2 X 78.0 UT	68.5 C/C DOWN	1/4" WALL	3750#
300-01483-ZN	AW 2 X 2 X 79.0 UT	72.62 C/C DOWN	1/4" WALL	3750#
300-00025-ZN	AW 2 X 2 X 80.0 UT	69.5 C/C DOWN	1/4" WALL	3750#
300-01484-ZN	AW 2 X 2 X 82.0 UT	76.00 C/C DOWN	1/4" WALL	3750#
300-00567-BL	AW 2 X 2 X 85.0 UT	76.0 C/C DOWN	1/4" WALL	3750#
300-00567-ZN	AW 2 X 2 X 85.0 UT	76.0 C/C DOWN	1/4" WALL	3750#
300-00463-ZN	AW 2 X 2 X 86.0 UT	78.0 C/C DOWN	1/4" WALL	3750#

AXLE WELDMENTS - LARGE SPINDLES ON TOP



NUMBER	DESCRIPTION	CENTER TO CENTER	MATERIAL	CAPACITY
300-01391-ZN	AW 2 X 3 X 77.0 LUT	69.0 C/C DOWN	1/4" WALL	6000#
300-00325-ZN	AW 2 X 3 X 80.0 LUT	69.0 C/C DOWN	1/4" WALL	6000#
300-01267-BL	AW 2 X 3 X 83.5 LUT	76.0 C/C DOWN	1/4" WALL	6000#
300-01267-ZN	AW 2 X 3 X 83.5 LUT	76.0 C/C DOWN	1/4" WALL	6000#
300-01390-ZN	AW 2 X 3 X 83.5 LUT	76.0 C/C DOWN	1/4" WALL	6000#

AXLES AND AXLE COMPONENTS

AXLE ASSEMBLIES

We offer spring axle or torsion axle assemblies. Spring axle assemblies include:

- 1) Axle weldment
- 2) Hub assembly

Our part number descriptions give you all of the necessary information for you to order the axle assembly you need.

Example #1:

Part Number – 310-01485-BL

Description – AA (01067) W/PAINTED BRAKES (FB)

AA= Axle Assembly

(01067)= Last five digits of axle weldment part number used in this axle assembly
(300-01067)

W/PAINTED BRAKES= Designates this axle has painted brake kits(backing plates).

Other brake designations:

NON BRAKE

W/GALVANIZED BRAKES

DISC BRAKES

(FB)= Designates this brake kit is a free backing brake kit

To find out axle dimensions, spring centers, and spindles, see axle weldment that is used in that assembly.

Torsion axle assemblies do not have a weldment that they are made from. For reason of conformity in our parts descriptions they all will have the weldment designation (00000).

Example #2:

Part Number – 200-00003-NA

Description – AA (00000) TORSION W/NO HUB W/FLANGE 2200#

W/NO HUB= Axle assembly does not have a hub included

Other hub designations:

4-BOLT

5-BOLT

W/BRAKE W/4-BOLT HUB

W/BRAKE W/5-BOLT HUB

W/ELEC BRAKE W/4-BOLT HUB

W/ELEC BRAKE W/5-BOLT HUB

CUSTOM BUILT AXLE FORM

What is the Gross Vehicle Weight Rating (GVWR) required? _____ LBS.
 GVWR=Carrying Capacity + Trailer Weight

Do you want to purchase an axle assembly (includes axle weldment and hub assembly) or axle weldment only (axle tube with spindles welded on)? Circle one.

Assembly

Weldment

Note: Brake axle assemblies cannot be shipped FedEx/UPS fully assembled because of weight. The hub assy's will be shipped separately. If you require receiving your brake axle fully assembled, please contact Customer Service.

How many axles do you need? _____ Non-Brake _____ Brake

What color/finish of your axle would you like? Circle One.

Powder Coat Black

Zinc Plated with Ultra Seal

What is the Hub Face to Hub Face measurement? _____ Inches

Where are the springs mounted on axle tube? Circle one.

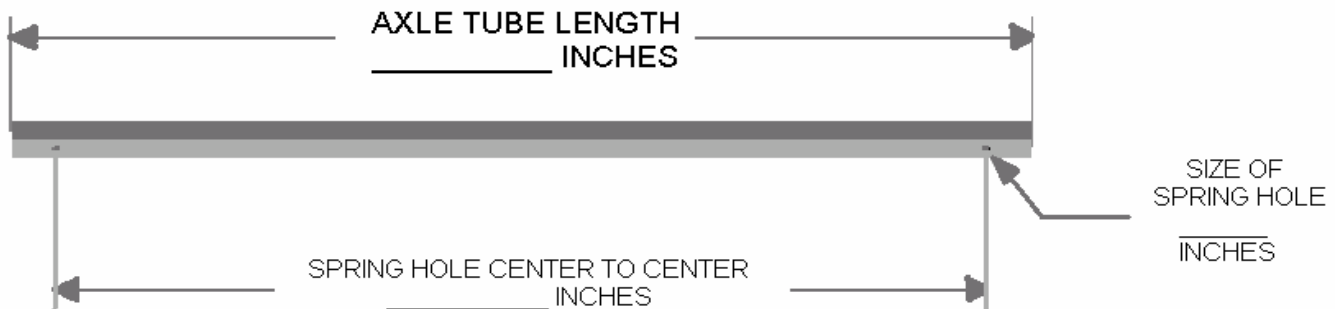
On **top** of tube

On **bottom** of tube

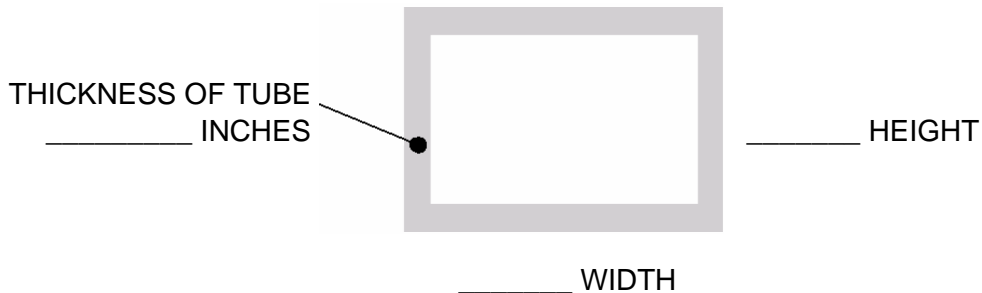
Where are the spindles welded to the axle? Circle one.



-Fill in all blanks-



Axle Drain Holes are Drilled as Necessary

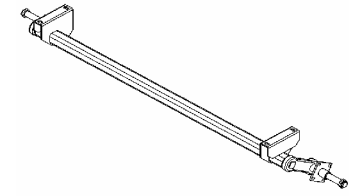


AXLE ASSEMBLIES

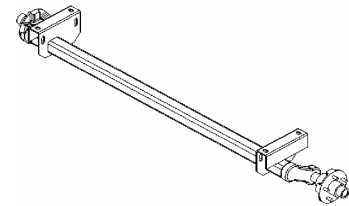
DISCLAIMER:

Illustrations are typical axle assemblies and do not represent every configuration available.

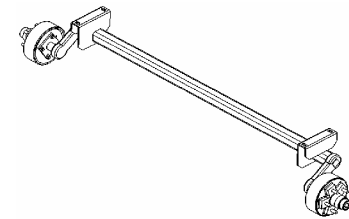
NUMBER	DESCRIPTION	HF*
200-00003-NA	AA (00000) TORSION NO HUB W/FLANGE 2200#	N/A
200-00024-NA	AA (00000) TORSION W/5-BOLT HUB 1800#	77.5
200-00007-NA	AA (00000) TORSION W/5-BOLT HUB 2200#	72.00"
200-00018-NA	AA (00000) TORSION NO HUB W/FLANGE 2500#	N/A
200-00017-NA	AA (00000) TORSION W/5-BOLT HUB 2500#	38.25"
200-00016-NA	AA (00000) TORSION W/5-BOLT HUB 2900#	72.50"
200-00019-NA	AA (00000) TORSION NO HUB W/FLNG 3750# (SHT)	N/A
200-00020-NA	AA (00000) TORSION NO HUB W/FLNG 3750# (LNG)	N/A
200-00021-NA	AA (00000) TORSION NO HUB W/FLANGE 4200#	N/A
200-00022-NA	AA (00000) TORSION NO HUB W/FLANGE 5200#	N/A
310-00667-NA	AA (00003) TORSION W/4-BOLT HUB	
310-00266-NA	AA (00003) TORSION W/BRAKE W/4-BOLT HUB	
310-00668-NA	AA (00003) TORSION W/BRAKE W/5-BOLT HUB	
310-01010-NA	AA (00003) TORSION W/ELEC BRAKE W/4-BOLT	
310-01011-NA	AA (00003) TORSION W/ELEC BRAKE W/5-BOLT	
310-00379-NA	AA (00018) TORSION W/5-BOLT HUB	
310-00179-NA	AA (00018) TORSION W/BRAKE W/5-BOLT HUB	
310-01762-NA	AA (00021) W/GALV BRAKES FB TORSION 4200#	92.3
310-01756-ZN	AA (00022) W/GALV BRAKES FB TORSION 5200#	92.3
310-00034-ZN	AA (00025) NON-BRAKE	86.25"
310-01005-ZN	AA (00025) W/DISC BRAKE	86.25"
310-01027-ZN	AA (00025) W/GALV BRAKES	86.25"
310-00035-ZN	AA (00025) W/PAINTED BRAKES	86.25"
310-00109-ZN	AA (00040) NON-BRAKE	69.25"
310-00142-ZN	AA (00060) NON-BRAKE	66.75"
310-00113-ZN	AA (00072) NON-BRAKE	49.00"
310-00156-ZN	AA (00082) NON-BRAKE	57.00"
310-00244-ZN	AA (00213) NON-BRAKE	69.25"
310-00333-ZN	AA (00301) NON-BRAKE	53.00"
310-00327-ZN	AA (00325) NON-BRAKE	89.125"
310-01026-ZN	AA (00325) W/GALV BRAKES (FB)	89.125"
310-00326-ZN	AA (00325) W/PAINTED BRAKES (FB)	89.125"
310-00118-ZN	AA (00453) NON-BRAKE	74.75"
310-00120-ZN	AA (00463) NON-BRAKE	92.25"
310-01031-ZN	AA (00463) W/ELEC BRAKES	92.25"
310-00122-ZN	AA (00463) W/PAINTED BRAKES	92.25"
310-00111-ZN	AA (00469) NON-BRAKE	71.25"
310-00337-ZN	AA (00498) NON-BRAKE	
310-00482-BL	AA (00567) NON-BRAKE	91.25"
310-00482-ZN	AA (00567) NON-BRAKE	91.25"
310-01061-ZN	AA (00567) W/GALV BRAKES	91.25"
310-01588-ZN	AA (00567) W/GALV BRAKES (FB)	91.25"
310-00590-BL	AA (00567) W/PAINTED BRAKES	91.25"
310-00590-ZN	AA (00567) W/PAINTED BRAKES	91.25"
310-01588-BL	AA (00567) W/PAINTED BRAKES (FB)	91.25"
310-00587-ZN	AA (00568) NON-BRAKE	82.75"
310-00698-BL	AA (00697) NON-BRAKE	91.25"
310-00698-ZN	AA (00697) NON-BRAKE	91.25"
310-00960-BL	AA (00949) NON-BRAKE	86.50"
310-00960-ZN	AA (00949) NON-BRAKE	86.50"
310-01070-BL	AA (00949) W/PAINTED BRAKES	86.50"
310-01070-ZN	AA (00949) W/PAINTED BRAKES	86.50"



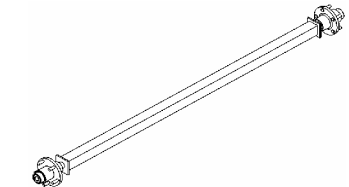
TORSION, NO HUB, W/FLANGE



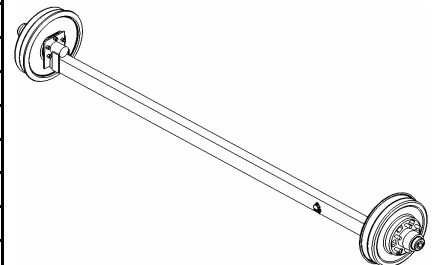
TORSION, W/HUB



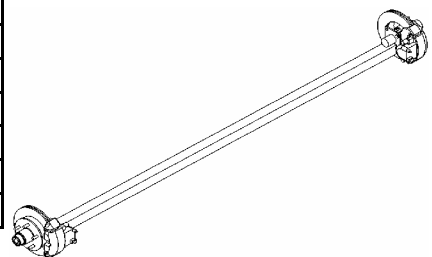
TORSION, W/BRAKE, W/HUB



NON-BRAKE



W/BRAKES



W/DISC BRAKES

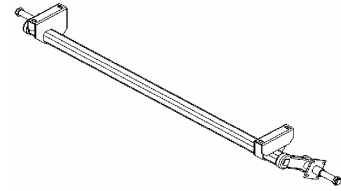
*HF = HUB FACE TO HUB FACE

NUMBER	DESCRIPTION	HF*
310-00959-BL	AA (00956) NON-BRAKE	86.25"
310-00959-ZN	AA (00956) NON-BRAKE	86.25"
310-00989-BL	AA (00956) W/PAINTED BRAKES	86.25"
310-00989-ZN	AA (00956) W/PAINTED BRAKES	86.25"
310-01510-BL	AA (00956) W/PAINTED BRAKES	86.25"
310-01510-ZN	AA (00956) W/PAINTED BRAKES	86.25"
310-01078-ZN	AA (01040) NON-BRAKE	69.25"
310-01085-ZN	AA (01042) NON-BRAKE	59.815"
310-01118-ZN	AA (01067) NON-BRAKE	88.25"
310-01126-ZN	AA (01067) W/GALV BRAKES	88.25"
310-01485-ZN	AA (01067) W/GALV BRAKES (FB)	88.25"
310-01119-ZN	AA (01067) W/PAINTED BRAKES	88.25"
310-01485-BL	AA (01067) W/PAINTED BRAKES (FB)	88.25"
310-01229-ZN	AA (01099) NON-BRAKE	82.75"
310-01252-ZN	AA (01132) NON-BRAKE	76.75"
310-01254-ZN	AA (01134) NON-BRAKE	85.25"
310-01574-ZN	AA (01134) NON-BRAKE	85.25"
310-01494-ZN	AA (01134) W/GALV BRAKES	85.25"
310-01578-ZN	AA (01134) W/GALV BRAKES	85.25"
310-01486-ZN	AA (01134) W/GALV BRAKES (FB)	85.25"
310-01486-BL	AA (01134) W/PAINTED BRAKES (FB)	85.25"
310-01289-ZN	AA (01162) NON-BRAKE	69.25"
310-01352-ZN	AA (01206) NON-BRAKE	91.25"
310-01484-ZN	AA (01206) W/GALV BRAKES (FB)	91.25"
310-01484-BL	AA (01206) W/PAINTED BRAKES (FB)	91.25"
310-01370-ZN	AA (01237) NON-BRAKE	37.75"
310-01482-BL	AA (01261) NON-BRAKE	77.75"
310-01482-ZN	AA (01261) NON-BRAKE	77.75"
310-01575-ZN	AA (01267) NON-BRAKE	92.625"
310-01483-ZN	AA (01267) W/GALV BRAKES	92.625"
310-01493-ZN	AA (01267) W/GALV BRAKES	92.625"
310-01483-BL	AA (01267) W/PAINTED BRAKES	92.625"
310-01493-BL	AA (01267) W/PAINTED BRAKES	92.625"
310-01455-ZN	AA (01285) NON-BRAKE	84.25"
310-01457-ZN	AA (01285) W/GALV BRAKES	84.25"
310-01456-ZN	AA (01285) W/PAINTED BRAKES	84.25"
310-01573-ZN	AA (01327) W/GALV BRAKES	90.50"
310-01572-ZN	AA (01343) NON-BRAKE	79.75"
310-01625-ZN	AA (01379) NON-BRAKE	79.75"
310-01621-ZN	AA (01382) NON-BRAKE	90.50"
310-01632-ZN	AA (01391) NON-BRAKE	86.125"
310-01633-ZN	AA (01391)W/PAINTED BRAKES (FB)	86.125"
310-01772-ZN	AA (01391) W/ELECTRIC BRAKE	
310-01648-ZN	AA (01404) W/GALV BRAKES (FB)	92.25"
310-01648-BL	AA (01404) W/PAINTED BRAKES (FB)	92.25"

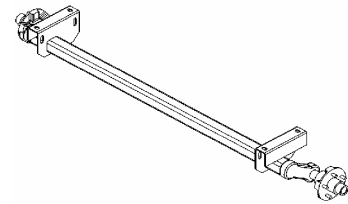
AXLE ASSEMBLIES

DISCLAIMER:

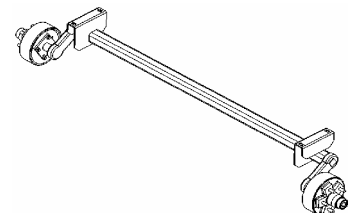
Illustrations are typical axle assemblies and do not represent every configuration available.



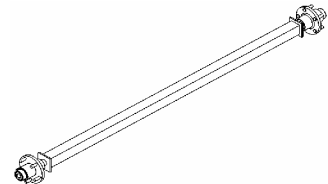
TORSION, NO HUB, W/FLANGE



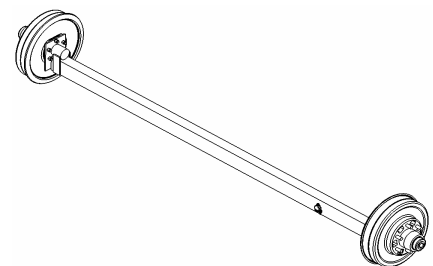
TORSION, W/HUB



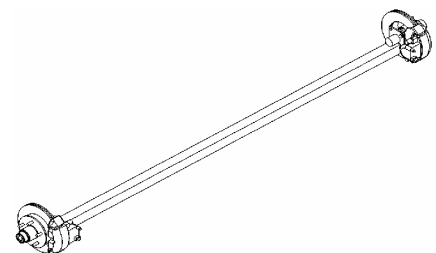
TORSION, W/BRAKE, W/HUB



NON-BRAKE



W/BRAKES



W/DISC BRAKES

*HF = HUB FACE TO HUB FACE

AXLES AND AXLE COMPONENTS

SPINDLES

Spindles are welded on top of an axle tube or inside an axle tube, to make an axle weldment.

There are three different spindles

- 1) Straight Spindle - holds 1.0625" inner bearing and 1.0625" outer bearing
- 2) UHI Spindle - holds 1.375" inner bearing and 1.0625" outer bearing
- 3) Large UHI Spindle - holds 1.75" inner bearing and 1.25" outer bearing

Our part number descriptions give you all of the necessary information for you to order the spindle you need.

Example #1:

Part Number – 218-00014-RW

Description – SPINDLE 1.0625 W/FLANGE 1350#

1.0625 = Spindle holds 1.0625" inner and outer bearing

W/FLANGE = Has flange welded to spindle

1350# = Capacity of spindle

Example #2:

Part Number – 218-00013-RW

Description – SPINDLE UHI 1.0625/1.375 BR/FL(IN)1875#

1.0625/1.375 = Spindle holds 1.375" inner bearing and 1.0625" outer bearing

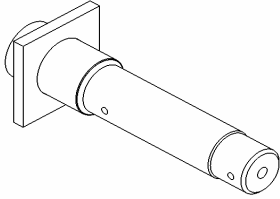
BR/FL = Spindle has a brake flange welded to it

(IN) = Spindle can **ONLY** be welded **INSIDE** axle tube

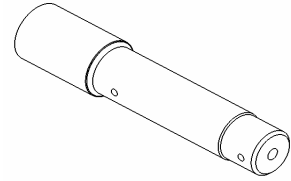
(TOP) = Spindle can **ONLY** be welded on **TOP** of axle tube

1875# = Capacity of Spindle

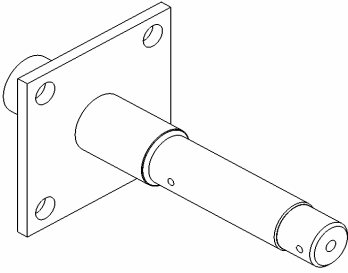
SPINDLES



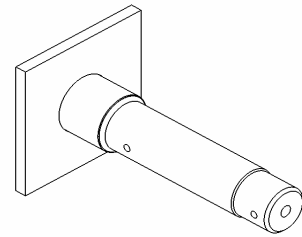
218-00017-RW
1.0625 - W/2 X 2 FLANGE
CAPACITY - 1350#



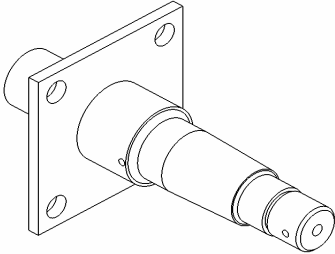
218-00005-RW
1.0625
CAPACITY - 1350#



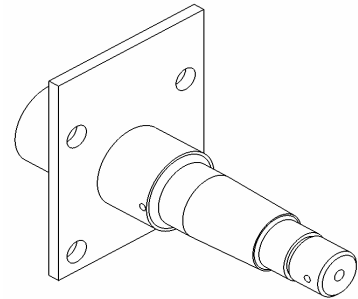
218-00011-RW
1.0625 BR/FL
CAPACITY - 1350#



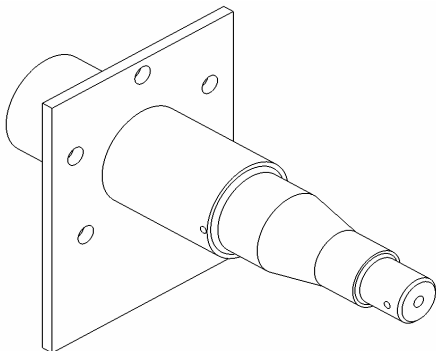
218-00014-RW
1.0625 - W/FLANGE
CAPACITY - 1350#



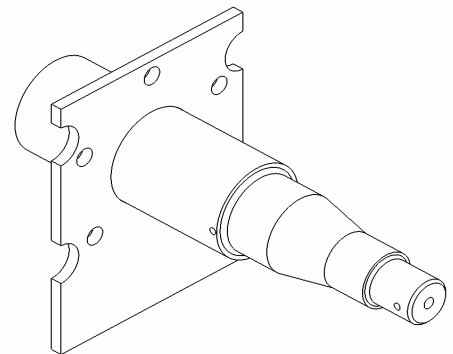
218-00013-RW
UHI 1.0625/1.375 BR/FL - IN
CAPACITY - 1875#



218-00002-RW
UHI 1.0625/1.375 BR/FL - TOP
CAPACITY - 1875#



218-00008-RW
LARGE UHI 1.25/1.75 BR/FL
CAPACITY - 3000#



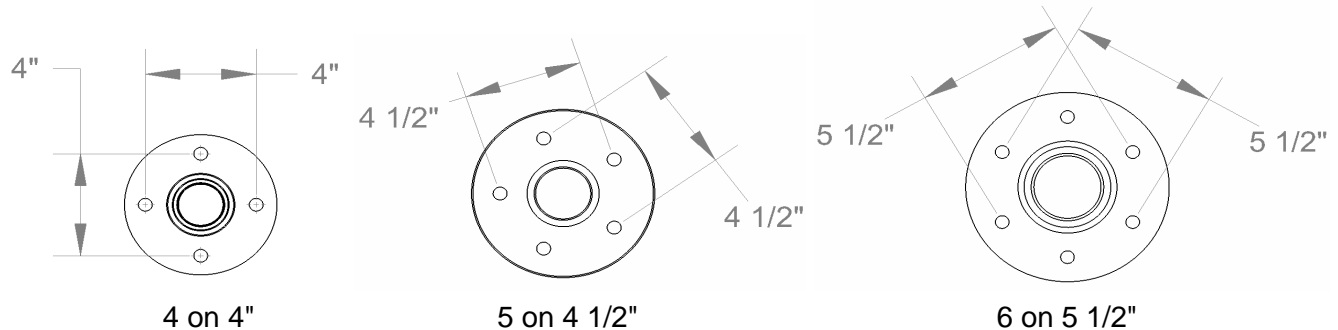
218-00021-RW
LARGE UHI 1.25/1.75 BR/FL
CAPACITY - 3000#
DISC BRAKE

AXLES AND AXLE COMPONENTS

HUBS AND ROTORS

All hubs mount on any of the three types of spindles we have.

Hub bolt patterns are:



Our part number descriptions give you all of the necessary information for you to order the hub or rotor you need.

Example #1:

Part Number – 213-00001

Description – HUB 4-BOLT BRAKE 7" STRAIGHT

4-BOLT = How many lugs on hub

Other hub designations:

5-BOLT

6-BOLT

BRAKE 7" = Designates brake hub and size of brake

STRAIGHT = Fits only on a STRAIGHT spindle

Other Spindle designations:

UHI = Fits only on a UHI spindle

LARGE UHI = Fits only on a LARGE UHI spindle

Example #2:

Part Number – 203-00077-NA

Description – ROTOR DISC BRAKE 5-BOLT CAD UFP 10 UHI

CAD = Type of finish used on rotor is cadmium plated

UFP = Only a UFP actuator can be used with this rotor

10 = Size of brake

UHI = Fits only on a UHI spindle

Other Spindle designations

STRAIGHT = Fits only on a STRAIGHT spindle

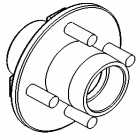
LARGE UHI = Fits only on a LARGE UHI spindle

NOTE:

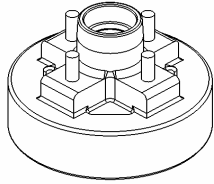
Part number 203-00139 - ROTOR DISC BRAKE 6-BOLT 12"

Includes dust cap, plug, bearing and bracket

HUBS AND ROTORS



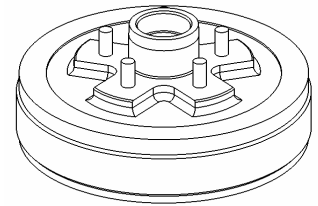
213-00004
HUB, 4-BOLT
STRAIGHT



213-00001
HUB, 4-BOLT BRAKE 7"
STRAIGHT



213-00001-SP1
REPLACEMENT STUDS #7-122
213-00003-SP1-A
REPLACEMENT STUDS (TIE DOWN)
213-00003-SP1-B
REPLACEMENT STUD ZINC
(DEXTER HUBS)
213-00003-SP1-C
REPLACEMENT STUD ZINC (UFP)
(213-3,6,7,8)



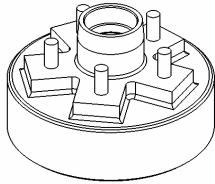
213-00003
HUB, 5-BOLT BRAKE 10" UHI
ELECTRIC OR DRUM



213-00003-SP2
1-1/16" BEARING RACE (L44610)
213-00001-SP2
1-1/16" BEARING RACE (L44610)

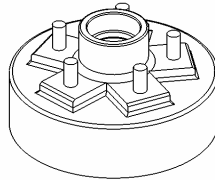


213-00003-SP3
1-3/8" BEARING RACE (L68111)
(DEXTER/TIEDOWN)

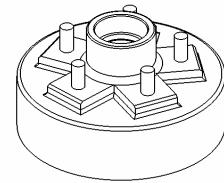


213-00011
HUB, 5-BOLT BRAKE 7"
STRAIGHT

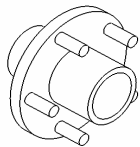
213-00011-SP1
REPLACEMENT STUDS #ST-500



213-00012
HUB, 5-BOLT ELECTRIC
BRAKE 7" STRAIGHT



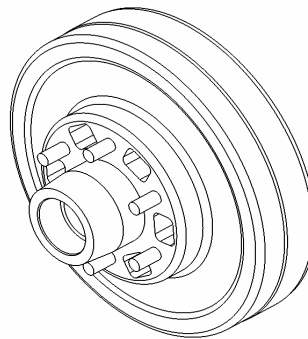
213-00010
HUB, 5-BOLT BRAKE
7" UHI



213-00006
HUB, 5-BOLT
STRAIGHT



213-00007
HUB, 5-BOLT UHI



213-00008
HUB, 6-BOLT BRAKE 12" LARGE UHI



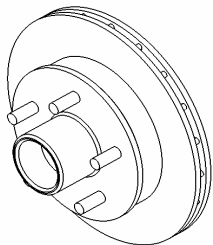
213-00008-SP1
REPLACEMENT STUDS
(DEXTER ONLY
213-8,9)



213-00008-SP2
1-3/4" BEARING RACE
(25520)

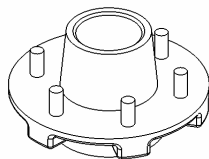


213-00008-SP3
1-1/4" OUTER RACE
(15245)

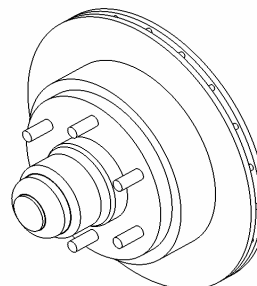


203-00077-CD
ROTOR DISC BRAKE 5-BOLT
E-COAT UFP 10" UHI

203-00077-SP1
REPLACEMENT STUD UFP
F/203-00077 DISC



213-00009
HUB, 6-BOLT
LARGE UHI



203-00139-NA
ROTOR DISC BRAKE 6-BOLT 12"
INCLUDES MOUNTING BRACKET
AND BEARING

203-00139-SP1
REPLACEMENT STUD

AXLES AND AXLE COMPONENTS

BRAKE KITS

(Brake Kits are available in Chapter 11 - Kits)

Brake kits, also known as backing plates, mount to axle weldments with brake flanges.

The four types of brake kits we offer are:

- | | |
|----------------------------------|--------------|
| 1.) Hydraulic Surge | 7", 10", 12" |
| 2.) Hydraulic Surge Free Backing | 10", 12" |
| 3.) Electric | 7", 10", 12" |
| 4.) Hydraulic Disc | 10", 12" |

Brake kits come with a black painted finish or a galvanized finish.

BRAKE KITS

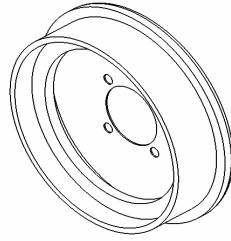


203-00002-SP1
WHEEL CYLINDER
REPLACEMENT KIT
(1 LH/1 RH)
FOR 7" BACKING PLATES

203-00004-SP5
WHEEL CYLINDER
REPLACEMENT KIT
LH ONLY
10" & 12"
BACKING PLATES

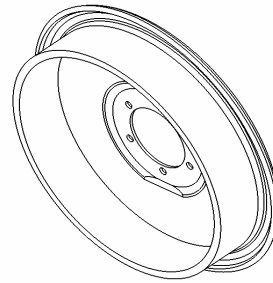
203-00004-SP1
WHEEL CYLINDER
REPLACEMENT KIT
(1 LH/1 RH)
FOR 10" & 12"
BACKING PLATES

203-00004-SP6
WHEEL CYLINDER
REPLACEMENT KIT
RH ONLY
10" & 12"
BACKING PLATES



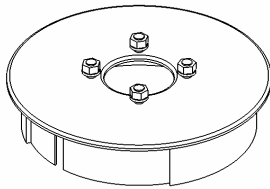
203-00080-BL
203-00080-GL
BRAKE KIT 10" (RH)
FREE BACKING

203-00079-BL
203-00079-GL
BRAKE KIT 10" (LH)
FREE BACKING



203-00026-BL
203-00026-GL
BRAKE KIT 12" (LH)
FREE BACKING

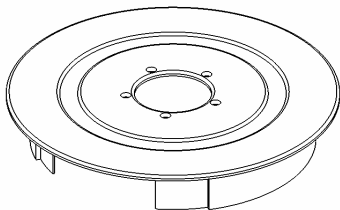
203-00027-BL
203-00027-GL
BRAKE KIT 12" (RH)
FREE BACKING



203-00036-NA
BRAKE KIT 10"
ELECTRIC (LH)

203-00035-NA
BRAKE KIT 10"
ELECTRIC (RH)

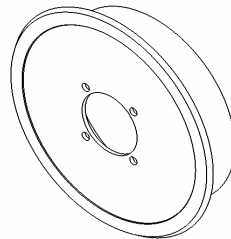
203-00112-GL
GALVANIZED BRAKE 10"
ELECTRIC (LH)



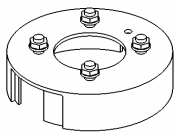
203-00054-NA
BRAKE KIT 12"
ELECTRIC (LH)

203-00055-NA
BRAKE KIT 12"
ELECTRIC (RH)

203-00113-GL
GALVANIZED BRAKE 10"
ELECTRIC (RH)



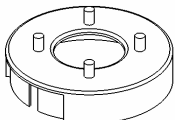
203-00114-GL
GALVANIZED BRAKE 12"
ELECTRIC (LH)



203-00002-NA
BRAKE KIT 7" (LH)
INCLUDES HARDWARE

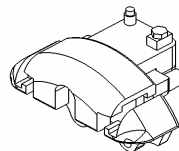
203-00003-NA
BRAKE KIT 7" (RH)
INCLUDES HARDWARE

203-00115-GL
GALVANIZED BRAKE 12"
ELECTRIC (RH)



203-00029-NA
BRAKE KIT 7"
ELECTRIC (LH)
INCLUDES HARDWARE

203-00030-NA
BRAKE KIT 7"
ELECTRIC (RH)
INCLUDES HARDWARE



203-00132-NA
DISC BRAKE
CALIPER (LH)
2-WAY CONNECTOR
UFP

203-00133-NA
DISC BRAKE
CALIPER (RH)
2-WAY CONNECTOR
UFP

AXLES AND AXLE COMPONENTS

HUB AND ROTOR ASSEMBLIES

Hub assemblies include:

- 1) SEAL
- 2) INNER AND OUTER BEARING
- 3) SLOTTED JAM NUT
- 4) GREASE ZERK
- 5) L-PIN
- 6) METAL DUST CAP
- 7) RUBBER DUST CAP
- 8) LUG NUTS
- 9) HUB

NOTE:

Hub assembly bearings and hub are packed with grease when shipped to you.

Our part number descriptions give you all of the necessary information for you to order the hub or rotor assembly you need.

Example:

Part Number - 310-00290-NA

Description - HA (00007) 5-BOLT UHI

HA = Hub Assembly

(00007) = The last five digits of The Hub or rotor part number that is used in this assembly (213-00007)

5-BOLT = How many lugs on Hub

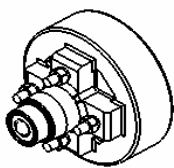
UHI = Type of spindle Hub Assembly will fit on

Other spindle designations:

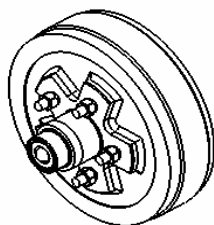
STRAIGHT

LARGE UHI

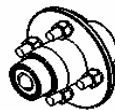
HUB AND ROTOR ASSEMBLIES



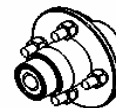
310-00291-NA
HA(00001) 4-BOLT
BRAKE 7"
STRAIGHT



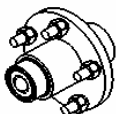
310-00293-NA
HA(00003) 5-BOLT
BRAKE 10" UHI



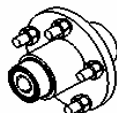
310-00286-NA
HA(00004) 4-BOLT
STRAIGHT



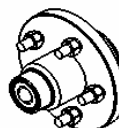
310-01330-NA
HA(00004) 4-BOLT
STRAIGHT -1-1/2" SEAL



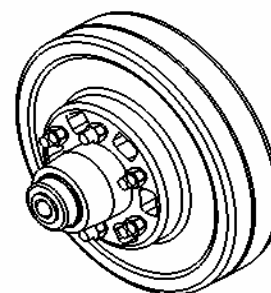
310-00288-NA
HA(00006) 5-BOLT
STRAIGHT



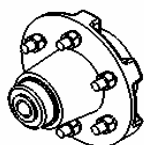
310-01331-NA
HA(00006) 5-BOLT
STRAIGHT
1-1/2" SEAL



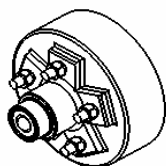
310-00290-NA
HA(00007) 5-BOLT
UHI



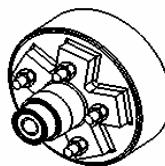
310-00452-NA
HA(00008) 6-BOLT
BRAKE 12" LARGE UHI



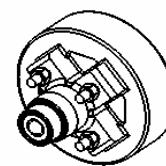
310-00451-NA
HA(00009) 6-BOLT
LARGE UHI



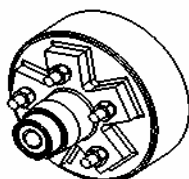
310-00268-NA
HA(00010) 5-BOLT
BRAKE 7" UHI



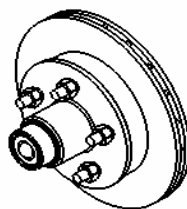
310-00260-NA
HA(00011) 5-BOLT
BRAKE 7" STRAIGHT



310-01332-NA
HA(00001) 4-BOLT BRAKE
7" STRAIGHT
1-1/2" SEAL

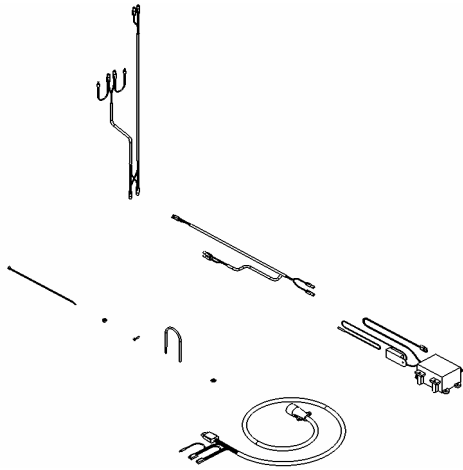


310-01333-NA
HA(00011) 5-BOLT BRAKE
7" STRAIGHT -1-1/2" SEAL



310-01627-CD
ROTOR ASSEMBLY (00077)
5-BOLT DISC BRAKE 10 UHI

310-02174-CD
ROTOR ASSEMBLY (00139)
6-BOLT DISC BRAKE 12 UHI



203-00119-NA
ELECTRIC BRAKE WIRING KIT
SINGLE AXLE

203-00120-NA
ELECTRIC BRAKE WIRING KIT
TANDEM AXLE

203-00121-NA
ELECTRIC BRAKE WIRING KIT
TRI-AXLE

203-00121-SP1
WIRE HARNESS
F/2 & 3 AXLE, ELECTRIC

BEARINGS

202-00001
BEARING CONE 1"
(L44643)

202-00002
BEARING CONE 1.0625"
(L44649)

202-00008
BEARING CONE 1.25"
(L15123)

202-00003
BEARING CONE 1.375"
(L68149)

202-00007
BEARING CONE 1.75"
(L25580)



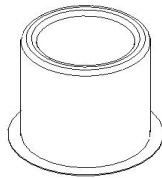
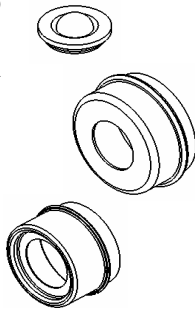
HUB COVERS

DUST CAPS

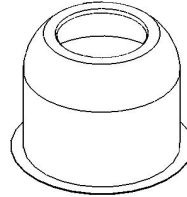
229-00115
DUST CAP - RUBBER

229-00059-NA
DUST CAP W/HOLE
(6-BOLT HUBS)

229-00233-NA
DUST CAP W/HOLE



229-00359
HUB COVER
SS3300T
(5-BOLT UHI)



229-00360
HUB COVER
SS4280T
(6-BOLT HUB)

DOUBLE LIP SEALS

217-00002
SEAL 1.25" I.D. 2.00" O.D.
(12192TB)

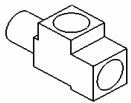
217-00007
SEAL 1.50" I.D. 2.00" O.D.
(15192TB)

217-00001
SEAL 1.75" I.D. 2.56" O.D.
(17255TB)

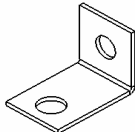
217-00006
SEAL 2.125" I.D. 3.38" O.D.
(21333TB)



MISC. BRAKE HARDWARE



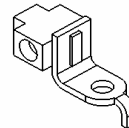
203-00032
ADAPTER TEE
TANDEM BOAT



100-01266-ZN
BRAKE LINE
MOUNTING
BRACKET



203-00033
BRASS UNION .1875"



203-00017-NA
3 WAY
DIVIDER BLOCK

GREASE

211-00099
14 OZ. GREASE CARTRIDGE
/HANDHELD GREASE GUN

BRAKE LINES

203-00013 BRAKE LINE STEEL 6"
203-00062 BRAKE LINE STEEL 12"
203-00018 BRAKE LINE STEEL 18"
203-00021 BRAKE LINE STEEL 66"
203-00048 BRAKE LINE STEEL 74"
203-00087 BRAKE LINE STEEL 78"

203-00057 BRAKE HOSE - RUBBER 24"

203-00116 BRAKE LINE PLASTIC 20"
203-00069 BRAKE LINE PLASTIC 25"
203-00142 BRAKE LINE PLASTIC 36"
203-00084 BRAKE LINE PLASTIC 45"
203-00123 BRAKE LINE PLASTIC 66"
203-00090 BRAKE LINE PLASTIC 70"
203-00117 BRAKE LINE PLASTIC 73"
203-00118 BRAKE LINE PLASTIC 75"

203-00070 BRAKE LINE PLASTIC 84"
203-00136 BRAKE LINE PLASTIC 88"
203-00137 BRAKE LINE PLASTIC 90"
203-00138 BRAKE LINE PLASTIC 92"
203-00130 BRAKE LINE PLASTIC 96"
203-00134 BRAKE LINE PLASTIC 101"
203-00135 BRAKE LINE PLASTIC 104"
203-00131 BRAKE LINE PLASTIC 110"
203-00071 BRAKE LINE PLASTIC 153"
203-00078 BRAKE LINE PLASTIC 163"
203-00072 BRAKE LINE PLASTIC 177"
203-00073 BRAKE LINE PLASTIC 201"
203-00095 BRAKE LINE PLASTIC 212"
203-00083 BRAKE LINE PLASTIC 228"
203-00085 BRAKE LINE PLASTIC 252"
203-00092 BRAKE LINE PLASTIC 260"
203-00105 BRAKE LINE PLASTIC 273"
203-00106 BRAKE LINE PLASTIC 288"
203-00103 BRAKE LINE PLASTIC 300"
203-00107 BRAKE LINE PLASTIC 316"

